

# LOVE YOUR TREE

*Cultivating Compassion Through Art*



## HOSTING YOUR OWN EXHIBIT

*Love Your Tree* is an arts-based program for students, of all ages focused on cultivating self-compassion, body acceptance and positive mental well-being through creativity, community connection and self-reflection. A crucial part of the program is the creation of artwork by students, classes and student-led clubs. But an even more important part is the sharing of that artwork in the virtual art gallery at [LoveYourTree.org](https://LoveYourTree.org) and in your local communities.

Art is powerful! Art sparks conversations, inspires new thinking and even shifts. When people see, hear or read your *Love Your Tree* messages, you are planting seeds. Conversations about mental health, body positivity and self-love will start growing where they might not have before!

**What's the best way to plant more seeds and reach more people?**

**HOST YOUR OWN LOVE YOUR TREE ART EXHIBIT! Here's how...**

**1. Identify a desired exhibit space and seek permission to use it.**

This could be anything from a bulletin board to a campus courtyard, art or health classroom, or auditorium.

**2. Identify a date and time for your exhibit opening (and closing).**

This might be a one-day special event or it might mean your group's artwork is displayed in a common space for up to a month or more.

**3. Establish a plan for how you will display the posters and how many you can include.**

This might involve heavy-duty tape or wall-safe tape, staples for bulletin boards, easels, fancy art hangers or display panels. It's up to you to determine what works best for your space, your budget and your community. Be sure to include labels with the artist name and poster title, which can easily be printed from a home printer.

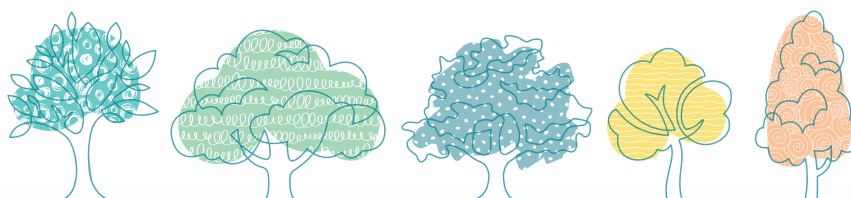
**4. Recruit volunteers to help you set up and clean up your exhibit.**

**5. Spread the word by creating a flyer or online event listing on social media or public calendars.**

Start promoting your event in person (flyers, posters, invitations) and online (social media posts, calendar listings) and remind students that they can do this at home with their family; it is not just an at-school activity.

**6. One or two days before your exhibit opening, curate your *Love Your Tree* exhibit!**

This generally requires help from your friends/volunteers. Larger and more complicated exhibits might require more time and effort to set up. This is also a great time to email potential guests a reminder about the event.



**STAY CONNECTED: We want to hear from you and see how you're getting involved!**

To learn more, visit [LoveYourTree.org](https://LoveYourTree.org)  
Email us at [LoveYourTree@ERCPATHLIGHT.COM](mailto:LoveYourTree@ERCPATHLIGHT.COM)

Follow us on social media:  
[@EatingRecovery](https://twitter.com/EatingRecovery) [@PathlightBH](https://twitter.com/PathlightBH) [#LoveYourTree](https://twitter.com/LoveYourTree)

# LOVE YOUR TREE

*Cultivating Compassion Through Art*

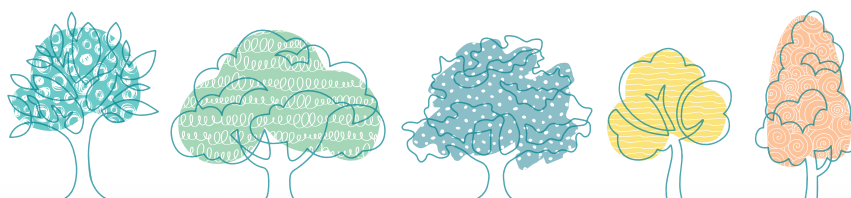


## 7. Host your event and have fun!

If you have a budget – or time to solicit donations – you can consider providing refreshments to your guests, playing background music or inviting a keynote speaker on mental health, body image or mindfulness to make the night extra special. Reach out to us at [LoveYourTree@ERCPATHLIGHT.COM](mailto:LoveYourTree@ERCPATHLIGHT.COM) and we may be able to support you in your search.

## 8. Take photos of your event and featured artists.

Send them to us at [LoveYourTree@ERCPATHLIGHT.COM](mailto:LoveYourTree@ERCPATHLIGHT.COM) and/or post them on your social media page with **#LoveYourTree**. You can also include them in thank-you emails or cards to participants, attendees and volunteers.



**STAY CONNECTED: We want to hear from you and see how you're getting involved!**

To learn more, visit [LoveYourTree.org](http://LoveYourTree.org)  
Email us at [LoveYourTree@ERCPATHLIGHT.COM](mailto:LoveYourTree@ERCPATHLIGHT.COM)

Follow us on social media:  
[@EatingRecovery](https://www.instagram.com/EatingRecovery) [@PathlightBH](https://www.instagram.com/PathlightBH) [#LoveYourTree](https://www.instagram.com/LoveYourTree)